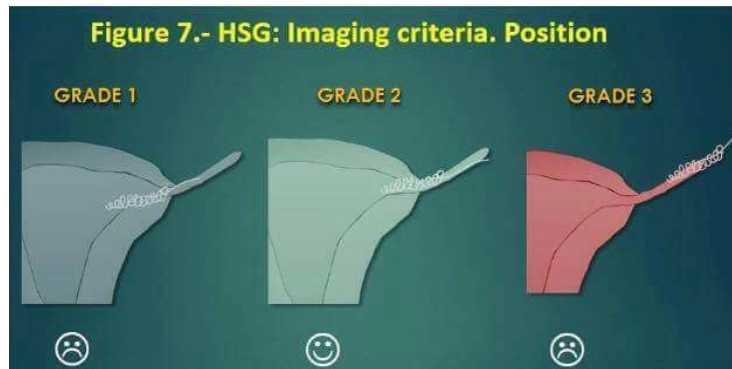


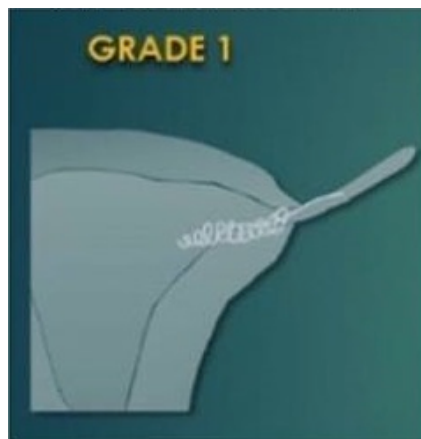
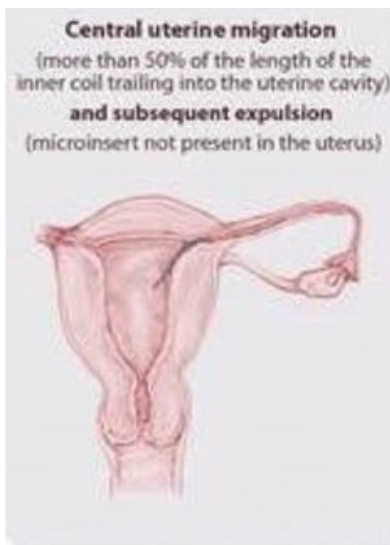
Essure location grades

There are four grades of location. These grades tell doctors where the Essure insert is located in relation to your uterus and fallopian tubes. Removing Essure can be done in several ways depending on the grade of location.



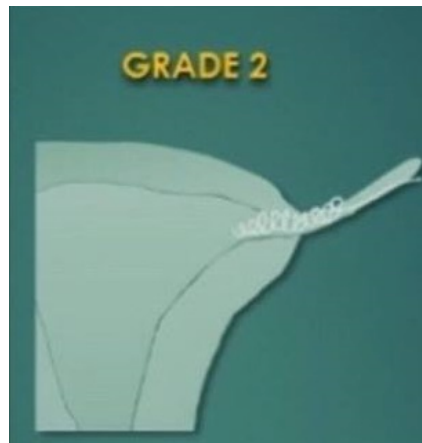
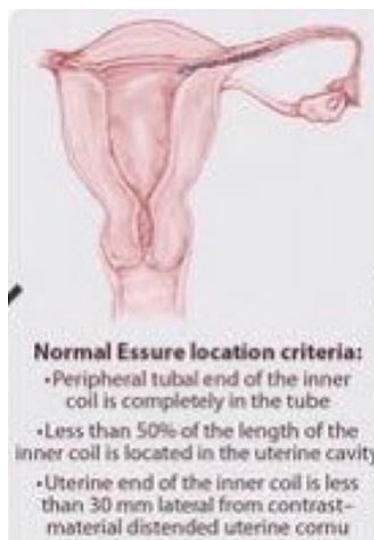
Grade 4 (not shown above) is where the Essure insert completely migrates away from the tube into the surrounding cavity or tissues.

Grade 1



In grade 1 positioning, more than 50% of the Essure insert's inner coil length is trailing into the uterine cavity, and/or is subsequently expelled - the Essure insert may not be present in the uterus.

Grade 2

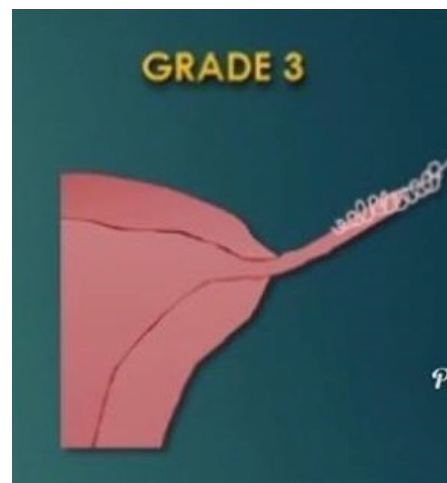
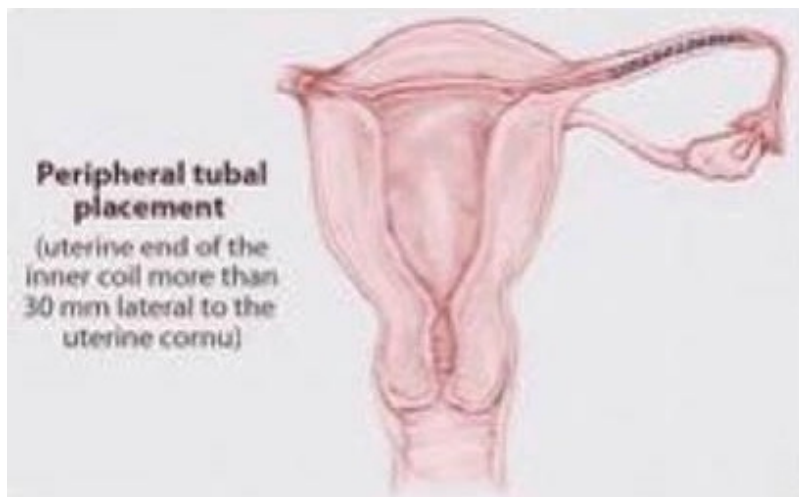


Grade 2 positioning is considered satisfactory. The distal (furthest away) end of the Essure insert is completely within the tube, and less than 50% of the inner coil length is located in the uterine cavity.

If the patient has been informed that their inserts are placed correctly then by default they *cannot* be suitable for bilateral salpingectomy only.

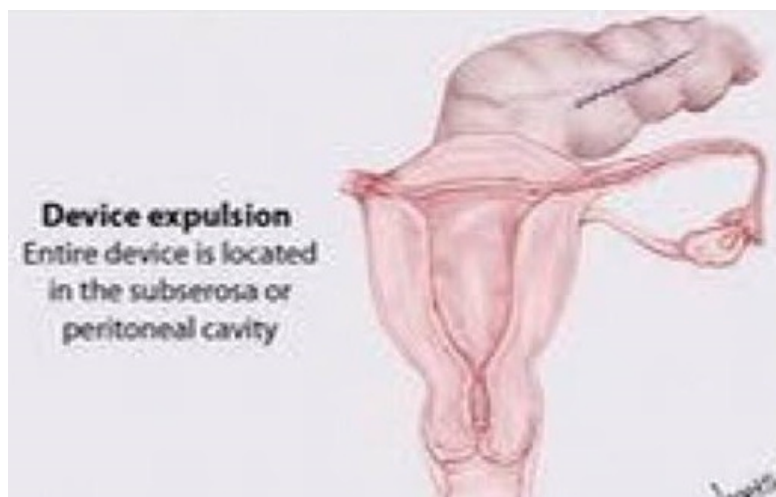
Essure location grades (con't..)

Grade 3



Grade 3 positioning suggests that the Essure insert is too far into the fallopian tube or has perforated the tube. The proximal end (the end closest to the uterus) is more than 30mm away from the uterine cornua. Alternatively the Essure insert may have perforated the tube and is found within the peritoneal cavity.

Grade 4



Grade 4 positioning refers to complete device migration - the whole of the Essure insert is found in the peritoneal cavity